

FUJIFILM

OFFICIAL IMAGING SPONSOR
OF WORLD CUP FRANCE 98



New

FUJIX DIGITAL COLOR PRINTER NC-300D



Capture an image and then print it immediately! That's how convenient it is when you connect the NC-300D digital printer directly to your DS-300 digital camera.

Along with the extra convenience, you'll have the professional-class quality of Thermo-Autochrome (TA) output.

DIRECT DS-300 OUTPUT



S I M P L Y S O P H I S T I C A T E D

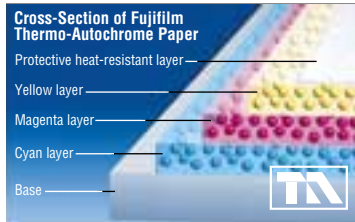
It All Starts with the Professional's Passion for Perfection

THE DIRECT DS-300 LINK

Just connect the NC-300D to the optional SCSI Extension Unit EU-D3/D3A on your DS-300 digital camera. That's all you need for outstanding output — without the extra time and bother of downloading your images to a PC.

QUALITY FOR THE CONNOISSEUR

You'll have the precision of 16.77 million colors and the photo-realistic quality of Fujifilm's exclusive Thermo-Autochrome (TA) printing system. With the YMC layers incorporated in the paper, it generates its own colors when it's exposed to heat.



READY TO GO

There's no time lost with unnecessary paper loading since both A6 and A5 prints can be output from the same roll of paper.

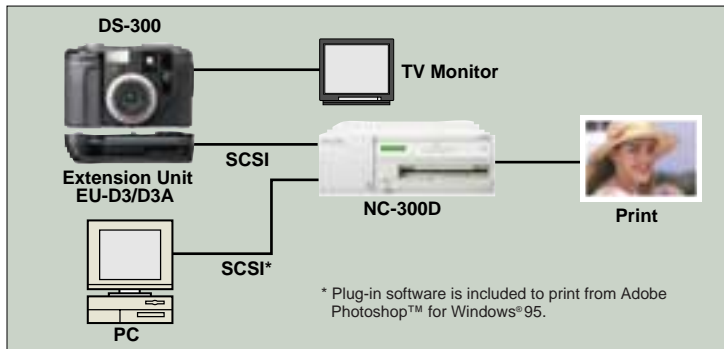
LONG-LASTING OUTPUT

Extremely resistant to scratches and friction, TA output is so durable that it compares with dye-sublimation prints.

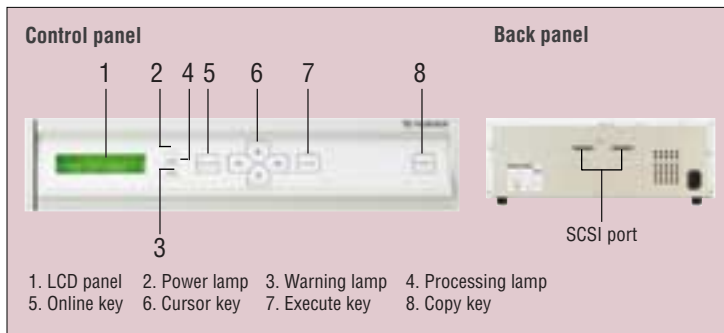
ECONOMICAL AND ENVIRONMENTALLY FRIENDLY

Since the TA paper creates its own colors, there are no ink ribbons. Along with preserving confidentiality, the system holds down running costs. It's also environmentally friendly.

SYSTEM CONFIGURATION



OPERATION PANEL



THERMO-AUTOCHROME PAPER

- Thermo-Autochrome Paper RA5-G100**
Roll paper for standard prints, 200 sheets/A6, 100 sheets/A5
- Thermo-Autochrome Paper RA6-G160S16**
Roll paper for sticker prints, 160 sheets/A6 (16 cuts/sheet)
- Thermo-Autochrome Paper RA6-G160S4**
Roll paper for sticker prints, 160 sheets/A6 (4 cuts/sheet)

SPECIFICATIONS

FUJIX DIGITAL COLOR PRINTER NC-300D

Print method	Light-fixing thermal color print system (Thermo-Autochrome system)
Print resolution	203 dpi
Paper sizes	A5: 210 × 148 mm/8.3 × 5.8 in., A6: 148 × 105 mm/5.8 × 4.1 in.
Print area	A5: 200 × 127 mm/7.9 × 5.0 in., A6: 127 × 95 mm/5.0 × 3.7 in.
Pixel counts	A5: 1,600 × 1,016 pixels, A6: 1,016 × 760 pixels
Media supported	Roll-type TA paper
Colors supported	16.77 million colors (256 gradations each of Y, M, C)
Printing time	A5: approx. 90 sec. A6: approx. 60 sec.
Interface	SCSI-II (2 × SCSI half-pitch connector [pin type])
Color adjustment functions	RGB color balance, sharpness
Power source	AC220–240V, 50/60Hz, 2A (European Model) AC110–120V, 60Hz, 5A (US/Canada Model)
Dimensions	430 (W) × 450 (D) × 146 (H) mm/ 16.9 (W) × 17.7 (D) × 5.7 (H) in.
Weight	Approx. 14.5 kg/32 lbs
System requirements for plug-in software	CPU of i486DX2 66MHz or Pentium RAM of 16MB or more (recommended: 32MB or more) 25MB hard disk space available (recommended: 50MB or more) OS: Windows® 95 Display: 256 colors or more Adobe® Photoshop ver. 3.0.5 or 4.0
Included accessories	Paper supply cartridge, Paper eject tray, Power cord (approx. 1.8 m/5.9 ft.), Paper flanges, SCSI terminator (Half-pitch 50-pin, pin-type), Jam driver, Floppy disk: Plug-in software for Photoshop™ on Windows® 95

Specifications are subject to change without notice.

Windows® is a registered trademark of Microsoft Corporation.
All other trademarks are the property of their respective holders.